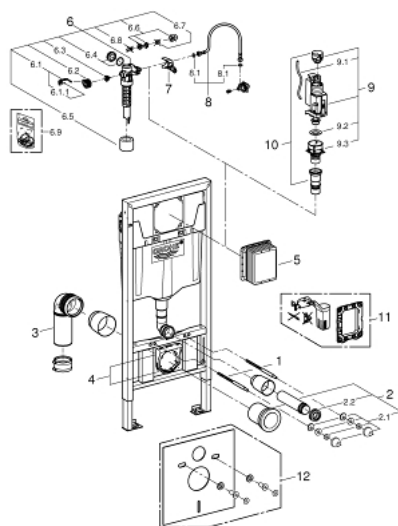


38 749 002 **RAPID SL WALL CARRIER FOR TOILET**



PRODUCT DESCRIPTION

- With vertical support for WC bowls with a bearing area of less than 20 cm
- With flushing cistern GD 2, 6 - 9 l
- 1.13 m installation height
- For on-the-wall installations or studded walls
- Powder coated steel frame, self-supporting
- For dry-cladding, completely pre-assembled
- with fixed connections
- quick adjustment, lockable
- Fixing material
- TÜV approved
- 2 WC fixing bolts
- Fixing device for ceramic
- Distance of fixing bolts 180/230 mm
- Depth adjustable
- Outlet bend Ø 90 mm
- Transition Ø 90 mm
- Inlet and outlet connecting set
- flushing cistern GD 2, 6 - 9 l
- Adjustment ex factory 6 l and 3 l
- Pneumatic discharge valve offering 3 modes of operation: dual flush or start/stop or single flush
- Water supply from left/right or back
- Low noise (group I acc. to German Noise Specification)
- Insulated against condensation
- ½" water supply connection including integrated angle valve and push fit flexible hose union
- No tools required for the installation of the inspection shaft including protection during construction phase
- For vertical or horizontal use
- without accessories for on-the-wall installation
- For mounting of small flush plates please order revision shaft 40 911 000 (sold separately)

38 749 002 **RAPID SL WALL CARRIER FOR TOILET**

SPARE PARTS, November 2016 – spareParts.validDate.now

- 1: Threaded screw (Order-nr. 4276400M)
- 2: WC inlet and outlet connecting set (Order-nr. 37311K00)
- 2.1: Bath faucet fastener (Order-nr. 43511SH0)
- 2.2: Connector (Order-nr. 37119000)
- 3: PP-outlet elbow (DN 90) (Order-nr. 42327000)
- 4: Support for outlet (Order-nr. 42243000)
- 5: Inspection shaft (Order-nr. 66791000)
- 6: filler valve US (Order-nr. 42485000)
- 6.1: Lever (Order-nr. 43734000)
- 6.1.1: Seal (Order-nr. 4377000M)
- 6.2: Valve head (Order-nr. 43536000)
- 6.3: Membrane (Order-nr. 4375800M)
- 6.4: Screw cap (Order-nr. 43735000)
- 6.5: Valve float (5 pcs) (Order-nr. 4379100M)
- 6.6: Dummy plug and escutcheon cap (Order-nr. 37125000)
- 6.7: Compression nut (Order-nr. 43258000)
- 6.8: Throttle (Order-nr. 42356000)
- 6.9: Set of seals (Order-nr. 43722000)*
- 7: Support unit (Order-nr. 42246000)
- 8: Connection tube (Order-nr. 42233000)
- 8.1: O-ring (Order-nr. 0319100M)
- 9: AV1 complete (Order-nr. 66558000)
- 9.1: pneumatic hose (Order-nr. 42319000)
- 9.2: Seal (Order-nr. 42310000)
- 9.3: Valve seat for GD2 (Order-nr. 42315000)
- 10: 4.5 l adapter for GD2 (Order-nr. 42333000)
- 11: Set Retrofit (Order-nr. 38796000)*
- 12: Set for noise protection (Order-nr. 37131000)*

* Optional accessories