

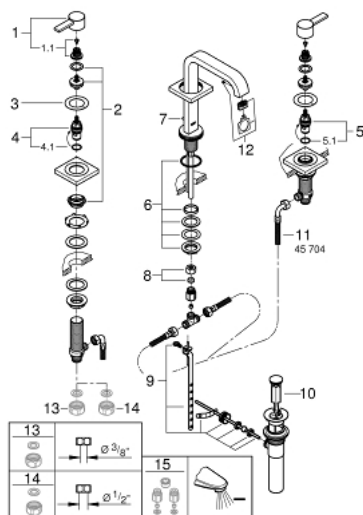
20 191 00A **ALLURE THREE-HOLE BASIN MIXER 1/2"**
M-SIZE



PRODUCT DESCRIPTION

- Colour: chrome
- with lever handles
- metal escutcheons
- Ceramic headparts 1/2", 90°
- GROHE Long-Life finish
- Spout with mousseur
- Pressure-proof, flexible connection hoses between spout and side valves
- Pop-up waste set 1 1/4"
- Max flow rate: 1.2 gpm (4.56 L/min)

20 191 00A **ALLURE THREE-HOLE BASIN MIXER 1/2"** **M-SIZE**



SPARE PARTS, March 2020 – spareParts.validDate.now

- 1: Handle (Order-nr. 48043000)
- 1.1: Repl. handle connection kit (Order-nr. 45186000)
- 1.1.1: O-ring (18,2 x 1,7mm) (Order-nr. 0392400M)
- 2: Extension for spindle (Order-nr. 48045000)
- 3: Sealing washer (Order-nr. 48047000)
- 4: Ceramic cartridge (Order-nr. 45882000)
- 4.1: O-ring (18,2 x 1,7mm) (Order-nr. 0392400M)
- 5: Ceramic cartridge (Order-nr. 45883000)
- 5.1: O-ring (18,2 x 1,7mm) (Order-nr. 0392400M)
- 6: Shank mounting kit (M28 x 1,5mm) (Order-nr. 45025000)
- 7: Pop-up rod (Order-nr. 65196000)
- 8: Compression union (3/8") (Order-nr. 12914000)
- 8.1: Seal (Order-nr. 45279000)
- 9: Ball rod (Order-nr. 48332000)
- 10: Plug (Order-nr. 48331000)
- 11: Flexible connection hose (Order-nr. 45704000)
- 12: Flow control (Order-nr. 13220000)
- 13: Coupling nut (1/2") (Order-nr. 1290100M)*
- 14: Coupling nut (1/2" x 14.5mm) (Order-nr. 1290200M)*
- 15: Water saving set (Order-nr. 48189000)*

* Optional accessories